

Aluminium Roller Shutter

The ALU-1237 Roller shutter provides a medium security solution for domestic & commercial applications spanning openings up to 4m wide and 12m². Each 37mm slat is crafted from double-skinned extruded aluminium and the solid profiles can be used in conjunction with the punched (PU) or perforated (PE) slats to form a composite security shutter, offering increased airflow and visibility.

Curtain

Double-skinned extruded aluminium slat

Finish: White, Anthracite & Black as standard. Option to powder coat to any RAL/BS colour (surcharge applies).

Visible Face: 37.5mm.

Weight per m²: 7.5kg.

Maximum Width: 4000mm.

Maximum Area: 25m².

Bottom Slat

Extruded aluminium bottom slat with rubber weather seal.



Enclosure/Housing

Roll-formed aluminium box with pressure-moulded aluminium alloy end plates.

Guide Height (mm)

Plate Size (mm)

1050	150
1535	165
1820	180
2795	205
3550	250
4700	300

Plate sizes shown as a guide only and may vary.

Guide Channels

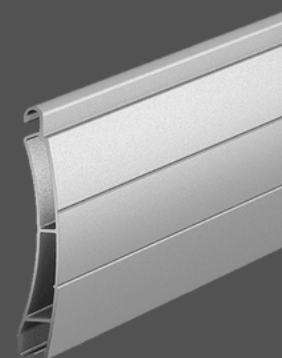
Extruded aluminium guide channels with brush inserts. Widths of 53mm, 60mm HD or 66mm.

Operation

Electric: Somfy tubular motor as standard. Safety brake as appropriate to comply with legislation. Manual override facility & crank handle as required (surcharge applies). All motors have numerous control option variants. Rocker switch as standard with options for key switch, remote, group or mobile phone activation. **Manual Spring & Lock:** A counter-balanced spring assembly with a key-lock bottom slat & handles.

Applications

Domestic and commercial sites, up to 12m². The ALU-1237 is a robust and lightweight barrier which is concealed within a compact enclosure when fully open. It is ideal for window openings and pedestrian door entrances, either internally or externally mounted, with a face or reveal fit.

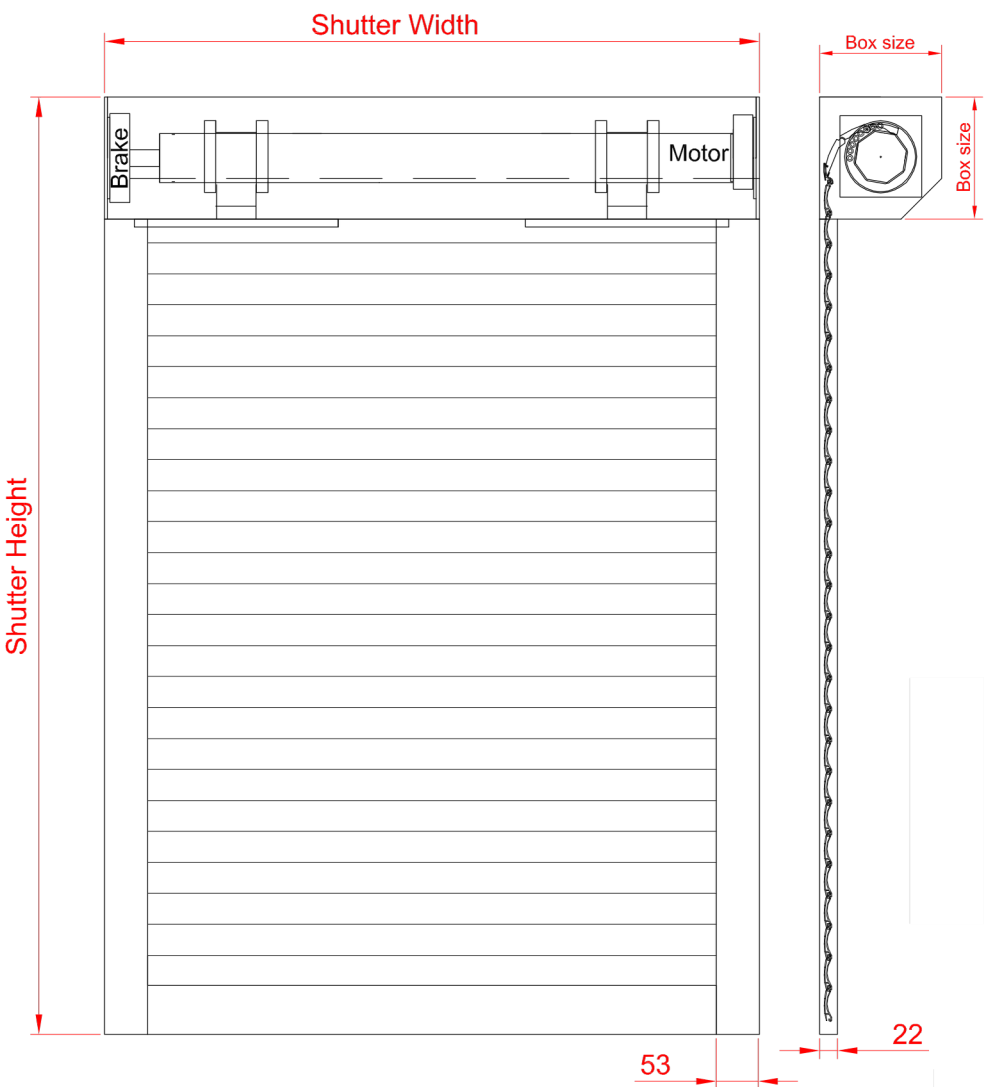


ALU-1237

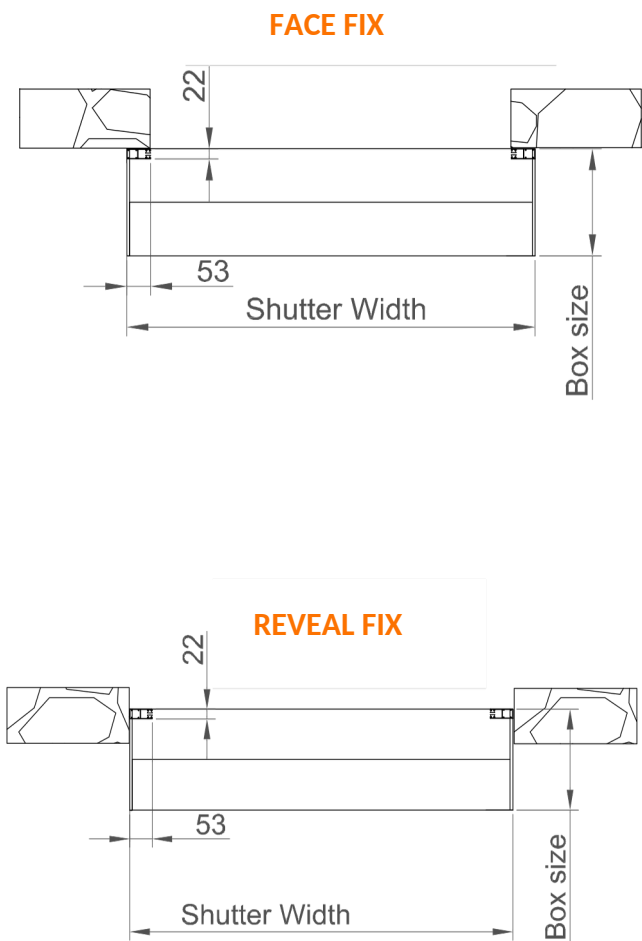
Extruded Aluminium Security Shutter



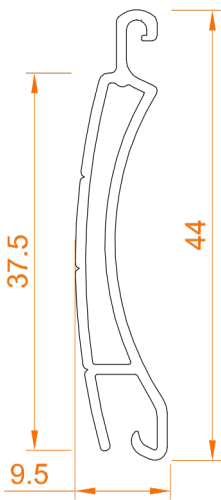
FRONT FACE



FIXING DETAIL



SLAT PROFILE



GUIDE CHANNELS

